

Guide to the Artwork at Webster Groves Public Library

Further along that wall you will find:

Charcoal study for Buccaneer's Retreat

(Charcoal and white chalk drawing)

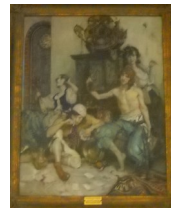
by **Fred Green Carpenter**

And just past there, along the east wall, is:

Buccaneer's Retreat

(Oil on canvas)

by **Fred Green Carpenter** (1882-1965) - a St. Louis artist and teacher known for choosing exotic topics and for paintings rich in color and detail. His wife and fellow artist, Mildred Bailey Carpenter, is the young woman on the right side of the painting.

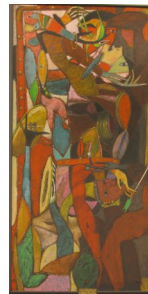


Continue to the south wall and find:

The Dancers

(Oil on Masonite)

by **Fred Conway** (1900-1973) - a St. Louis native and teacher who worked in a variety of media with subjects ranging from portraits to landscape to street and city scenes. This painting is representative of his abstract style and his use of bright colors. We have two works by Fred Conway at the library.



*Now, leave the Reading Room and head toward the Meeting Room.
Under the staircase is: (Will be on display soon)*

Rudy

(Resin)

by **Rudolph Torrini** (1923-2018) - a St. Louis native and Professor Emeritus of Fontbonne College, he was known for his bronze public monuments. Torrini first worked as a musician and always listened to classical music while creating his sculptures.

On the south wall is:

Gloucester Harbor

(Oil on canvas)

by **Kathryn Cherry**

On the north wall is:

Helfenstein Home

(Watercolor)

by **Marilynne Bradley**

and

Harbor

(Watercolor)

by **Fred Conway**

Take the stairs or elevator to the Upper Level, and just outside of the elevator is:

Pinocchio and the Fairy

(Oil on canvas)

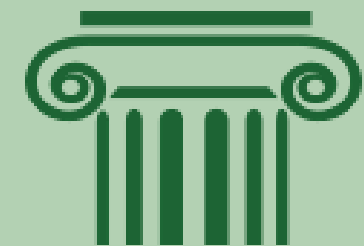
by **Edward Boccia** (1921-2012) - a Webster Groves artist and teacher who was known for his large scale paintings often in triptychs or polyp-tychs. Boccia was also a poet and wrote several volumes of poetry.



WEBSTER GROVES
PUBLIC LIBRARY



Artwork at Webster Groves Public Library





Guide to the Artwork at the Webster Groves Public Library



This brochure will lead you through the artworks in a circuit through the building, but you may want to just wander and browse them at random.

Beginning just inside the front door, on the wall facing the door:

Forest Park in Autumn

(Oil on canvas)

by **Dawson Dawson-Watson** (1864-1939) - a British born painter who taught in St Louis from 1904-1915. He is best known for his paintings of cacti and Western U. S. landscapes.



Around the corner to the right you will find:

Wild Flowers

(Oil on canvas)

by **Kathryn Cherry** (1880-1931) - a teacher and an artist who lived in St. Louis for most of her life. She was known for paintings of floral and marine scenes. The library has 4 works by Kathryn Cherry.



Following the wall to your right, you come to:

Chrysanthemums

(Oil on canvas)

by **Eleanor Hartwell** (1978-1956) - an amateur artist who had works exhibited at the St. Louis Art Museum. Ms. Hartwell lived just four blocks from the library.

The large painting which is next on the west wall is:

Air Raid

(Oil on panel)

by **Charles F. Quest** (1904-1993) - a St. Louis native who worked in a wide variety of media including oil, woodcut, stained glass, stone, mosaics and watercolor. He was known for works of political commentary.



Around the corner, entering the Library Director's office, on the south wall is:

Hillside along Barrett Station Road

(Oil on canvas)

by **Herbert Stephenson Wilson** (1892-1929) -an American painter who lived in the St. Louis area for a few years. He was known for his impressionistic rural landscapes.

On the north wall of the director's office is:

Webster Groves Public Library

(Watercolor)

by **Marilynne Bradley**—a Webster Groves resident and teacher who specializes in paintings that show the charm and character of her subject while retaining its architectural design.

Back out in the Reading Room, on the wall to your left is:

Portrait of Ethel

(Oil on canvas)

by **Alvin J. Metelman** (1896-1948) - a St. Louis artist and teacher who is known for his portraits of average people, including neighbors and family members. The Ethel in this portrait is the artist's wife.



Further right along that wall, you come to a small alcove. Within the alcove are 3 paintings:

Bright Morning

(Oil on canvas board)

and

Summer Landscape with Church and Figures

(Oil on canvas board)

Both paintings by **Kathryn Cherry**

and

English Midlands

(Acrylic on canvas)

by **Nancy Berndt**—a Webster Groves artist who paints scenes of everyday life, landscapes, portraits and the whimsical. This work was painted while on a visit to England.



Move now to the other side of the Reading Room, and high on the wall to your left are 3 paintings:

Scenes at Route 66 State Park

(Oil on canvas)

by **Tom Hunt**—a native of Cincinnati, Ohio and is a graduate of Washington University. He is an art teacher at Nerinx Hall and specializes in Missouri and European landscapes.

Beneath Tom Hunt's paintings, you will find:

Through the Wonder

by **Evan and Stacey Smith**— Evan was born in West Virginia and has an art degree from Webster University. Stacey grew up in St. Louis and has a degree in civil engineering from the University of Missouri. This whimsical sculpture is an example of the artists' focus on blending art and science.